

# Power Portfolio





Hexagon's Geospatial division helps you make sense of the dynamically changing world. From local businesses analyzing agricultural and natural resource needs to national mapping agencies, a wide variety of organizations across the globe rely on our technology every day to help them understand the effects of our geography.

Our Power Portfolio® enables you to understand change and derive information you require to make mission- and business-critical decisions. With creative and intuitive interfaces, smart workflows, and automated technologies, the Power Portfolio enables you to transform multi-source content into actionable information. It allows you to:

- Harness data production and big data management
- Customize and easily interpret geospatial analytics
- Deliver context and industry-specific information through the cloud to the online, digital, and mobile world


## What Is the Power Portfolio?

The **Power Portfolio** combines the best photogrammetry, remote sensing, GIS and cartography technologies available. Flowing seamlessly from the desktop to server-based solutions, these technologies specialize in data organization, automated geoprocessing, spatial data infrastructure, workflow optimization, web editing, and web mapping. With this united approach, you are able to see the big picture and make sense of all the change.

The Power Portfolio organizes our product offering into representative categories describing your broader geospatial functions. Our industry-leading products retain their globally-recognized names while being positioned within the three Suites of the Power Portfolio:

- **Producer Suite** – Intelligently author, analyze, process, and map multiple sources of data
- **Provider Suite** – Compress, manage, and deliver volumes of geospatial and business data
- **Platform Suite** – Efficiently build and deploy smart solutions that fit your needs

Individually, these are incredibly powerful suites of technology, containing industry leading products. We know and understand that every business has different needs, and so we provide the flexibility for you to hone in on the tools you require, easily combining technologies across products and suites.

 **We know and understand that every business has different needs, and so we provide the flexibility for you to hone in on the tools you require...**



# Producer Suite

## Producer Suite

The Producer Suite® empowers you to collect, process, analyze, and understand raw geospatial data and ultimately deliver usable information. This includes our desktop-based GIS, remote sensing, and photogrammetry offerings to help you:

- Process large quantities of raw spatial information
- Unearth insightful information from imagery, terrain, RADAR and LIDAR data sources
- Create, update and analyze valuable geospatial information
- Deliver dynamic analysis and mapping products



## GIS

Our complete GIS package is a flexible solution for creating, updating, managing, and analyzing your organization's valuable geospatial information. Highly specialized functionality makes it ideal for extracting information from an array of ever-changing data. With our GIS products, you can:

- **Generate** and update vector layers, perform dynamic spatial analysis and reports, and automatically create and update maps while managing data and map production more efficiently
- **Exploit** the power of your corporate database with support for extensive native spatial data-types, and with no middleware required
- **Leverage** a high degree of performance while reliably meeting your demands through our flexible architecture



## Photogrammetry

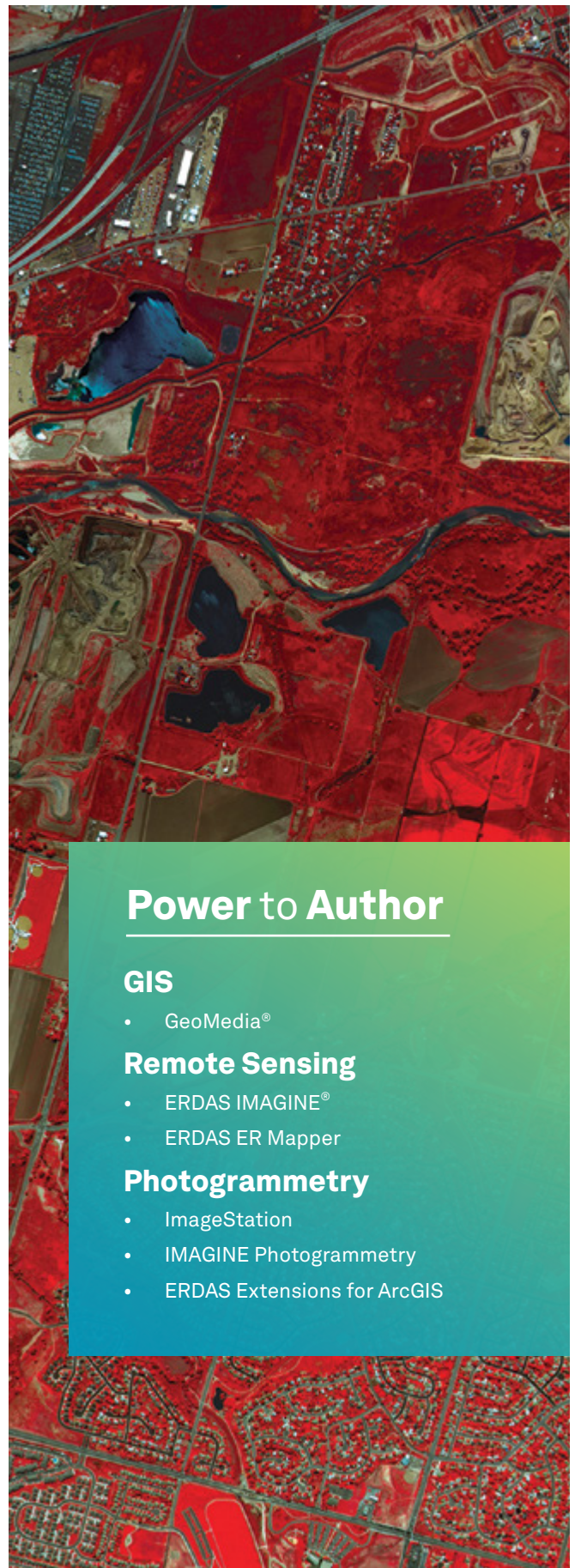
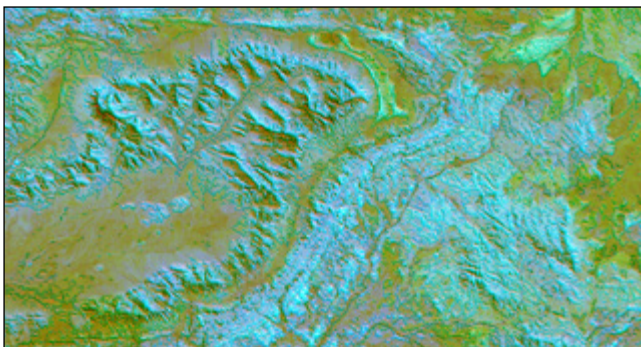
Connect large quantities of raw spatial information to locations on the earth's surface, and transform that data into actionable formats with our photogrammetry products, which allow you to:

- Collect and update features for your enterprise GIS using photogrammetric techniques
- Employ a single, seamless, process-driven workflow for triangulation, terrain generation and editing, ortho-mosaic creation, and 3D feature extraction
- Leverage our photogrammetric expertise with extensions for real stereo visualization and precise 3D feature and terrain collection within other geospatial environments (such as Microstation, Esri, and more)

## Remote Sensing

Deploy the world's most widely-used remote sensing software solution, combining imagery, terrain, RADAR, and point cloud data sources to extract rich information that cannot be detected through visual inspection alone. Our remote sensing software enables you to:

- Create remarkable value-added products seamlessly and simply through automated and wizard-driven workflows
- Combine our next-generation spatial modeler with your ingenuity and greatly expand your problem-solving capabilities
- Optimize your hardware investment by distributing batch processes across a network of computers, saving time and money



## Power to Author

### GIS

- GeoMedia®

### Remote Sensing

- ERDAS IMAGINE®
- ERDAS ER Mapper

### Photogrammetry

- ImageStation
- IMAGINE Photogrammetry
- ERDAS Extensions for ArcGIS



# Provider Suite

## Provider Suite

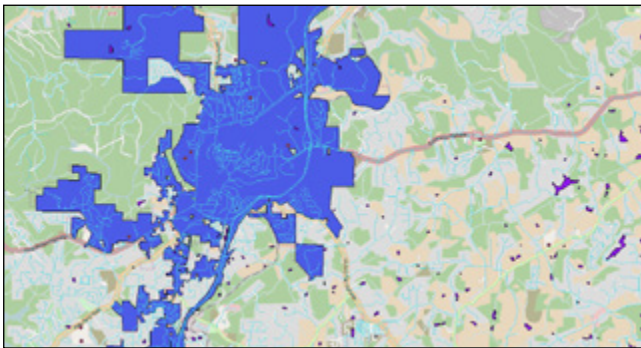
The Provider Suite® allows you to manage and deliver your data to others. It allows you to:

- Organize file-based, database, and web-enabled geospatial and business data into a centralized library
- Distribute data from the cloud or on-premise across desktop, web, and mobile applications
- Proliferate geospatial data within and across large, disparate organizations
- Optimize disk space requirements, reducing total cost of ownership

## Data Management

Organize vast amounts of distributed geospatial and business data into a centralized and comprehensive human-readable library. With our data management solution, you can:

- **Provide** a central data repository for all geospatial and business data while minimizing infrastructure needs
- **Enable** complex searches of assets against rich metadata
- **Distribute** massive amounts of data to thousands of users efficiently and quickly, in a variety of delivery protocols
- **Empower** your end-users to create value-added data products, so they can make sense of change

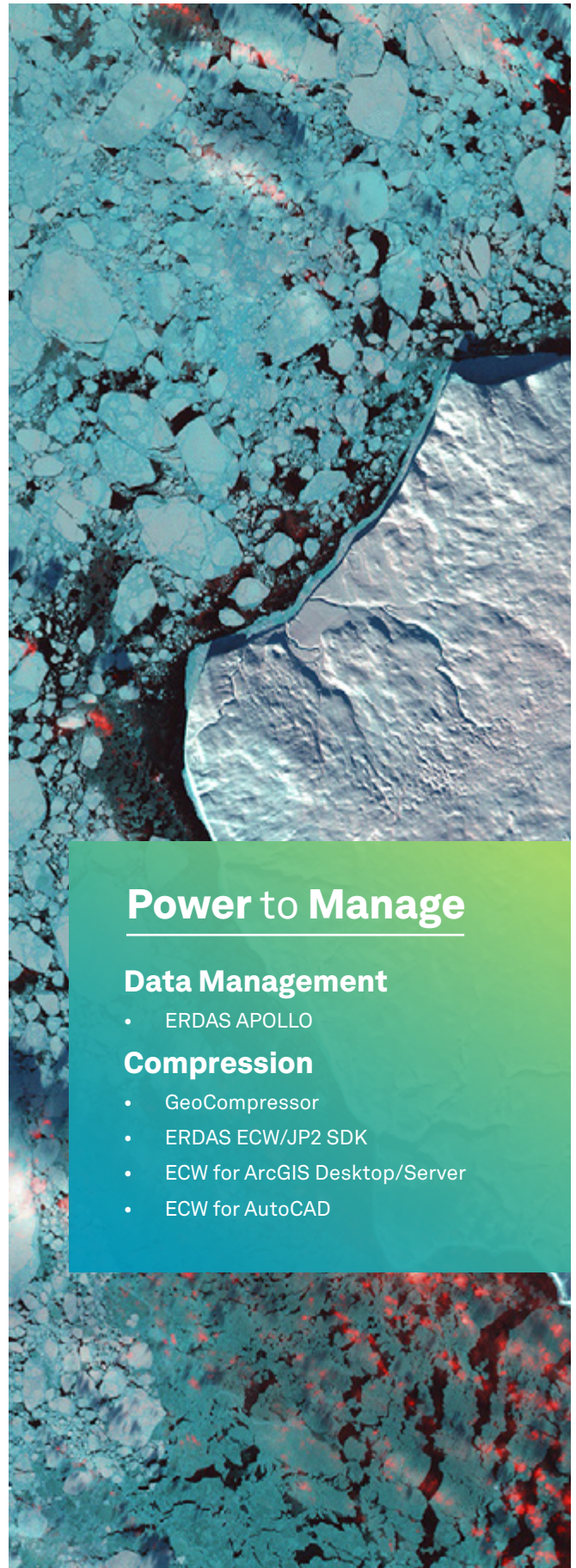




## Compression

Alleviate pressures associated with expanding imagery data holdings and the requirements of an increasingly demanding and diverse user base. Our patented, proprietary Enhanced Compression Wavelet (ECW) file format is the best in the business, and our industry leading ISO JPEG2000 support satisfies all geospatial image compression needs. With our compression products, you can:

- Capitalize on the fastest, lowest-load, and lowest-cost image compression and decompression available on the market today
- Deploy a visually lossless file format that can curtail disk space requirements by up to 95 percent
- Reduce the cost of storage and associated management tasks through the tremendous efficiency of ECW technologies



## Power to Manage

### Data Management

- ERDAS APOLLO

### Compression

- GeoCompressor
- ERDAS ECW/JP2 SDK
- ECW for ArcGIS Desktop/Server
- ECW for AutoCAD



# Platform Suite

## Platform Suite

The Platform Suite® enables you to deliver information through the development of a web, mobile, or cloud solution. Information derived from the Platform Suite's technologies enable you to derive reliable, context-specific information necessary for making informed decisions. With the Platform Suite, you are able to:

- Build customized geospatial apps and solutions with a sophisticated set of developer-focused technologies
- Extend geospatial functionality where you need it – in the cloud or on web, desktop, and mobile devices using modern and dynamic toolkits

## Smart Workflows

Empower end users without a significant geospatial background to leverage advanced geospatial functionality in their workflows. With Smart Workflows, you can:

- **Integrate** geospatial information and focused business processes
- **Construct** powerful, highly constrained, map-based processes that guide the user step-by-step through creating and attributing geospatial data
- **Avoid the cost and complexity** of desktop GIS by utilizing supporting high-end functionality and disconnected workflows in a web-based client application





## Web GIS

Bring real-time enterprise data access and sophisticated analysis to the web with a fully scalable and customizable server solution that deploys high-end web services and websites. Web GIS allows you to:

- Deploy a flexible solution for managing secure information and serving it to a wide variety of desktop, web, and mobile applications
- Provide secure integration with existing GIS, CAD environments, and business systems with our interoperable platform built on proven technological standards
- Customize your web interface, create user-defined queries and provide direct access to your geospatial data
- Ensure firm adherence to Open Geospatial Consortium (OGC®) and International Standards Organization (ISO) standards for web services and metadata compliance

## Mobile

Embracing the ever-broadening capabilities of today's mobile devices, we provide several pre-packaged, yet easily-customizable, mobile applications. With our mobile applications, you can:

- Access, review, and update geospatial data and asset information real-time in the field
- Tap into data and analytics to support specific business workflows



## Power to Build Solutions

### Smart Workflows

- GeoMedia Smart Client

### WebGIS

- GeoMedia WebMap
- Geospatial SDI
- Geospatial Portal

### Mobile

- GeoMedia WebMap Mobile







## Your Complete Geospatial Solution

Hexagon's Power Portfolio provides a simple, sophisticated, integrated approach to harnessing the traditional domains of GIS, remote sensing, photogrammetry, and mapping with applications across the enterprise.

As change happens, you can derive real-time information. Providing the utmost flexibility, the Power Portfolio provides a complete solution and the building blocks to develop customized applications to meet your needs.

We provide software products and platforms through direct sales, channel partners, and Hexagon businesses, including the underlying geospatial technology to drive Hexagon Safety & Infrastructure industry solutions. Hexagon Geospatial plays a key role in Hexagon's multi-industry focus, leveraging the entire portfolio for a wide variety of geospatial needs. Hexagon is a leading global provider of design, measurement and visualization technologies.

## Contact Us



<https://go.hexagongeospatial.com/contact-us-today>





Hexagon is a global leader in sensor, software and autonomous solutions. We are putting data to work to boost efficiency, productivity, and quality across industrial, manufacturing, infrastructure, safety, and mobility applications. Our technologies are shaping urban and production ecosystems to become increasingly connected and autonomous — ensuring a scalable, sustainable future.

Hexagon's Geospatial division creates leading platforms, applications and solutions for visualizing, analyzing, and deriving insight from location data. By interconnecting the geospatial and operational worlds, we help customers of all sizes – from sites to cities to nations – use 5D location intelligence to solve real-world, mission-critical challenges.

From snapshots in time to real-time streams, our technology enables autonomous connected ecosystems that deliver reliable, repeatable location information. We shorten the loop from data acquisition to action, helping clarify what was, what is, what could be, what should be, and ultimately, what will be, so we can build a thriving, sustainable world.

Hexagon (Nasdaq Stockholm: HEXA B) has approximately 20,000 employees in 50 countries and net sales of approximately 4.3bn USD. Learn more at [hexagon.com](https://www.hexagon.com) and follow us @HexagonAB.